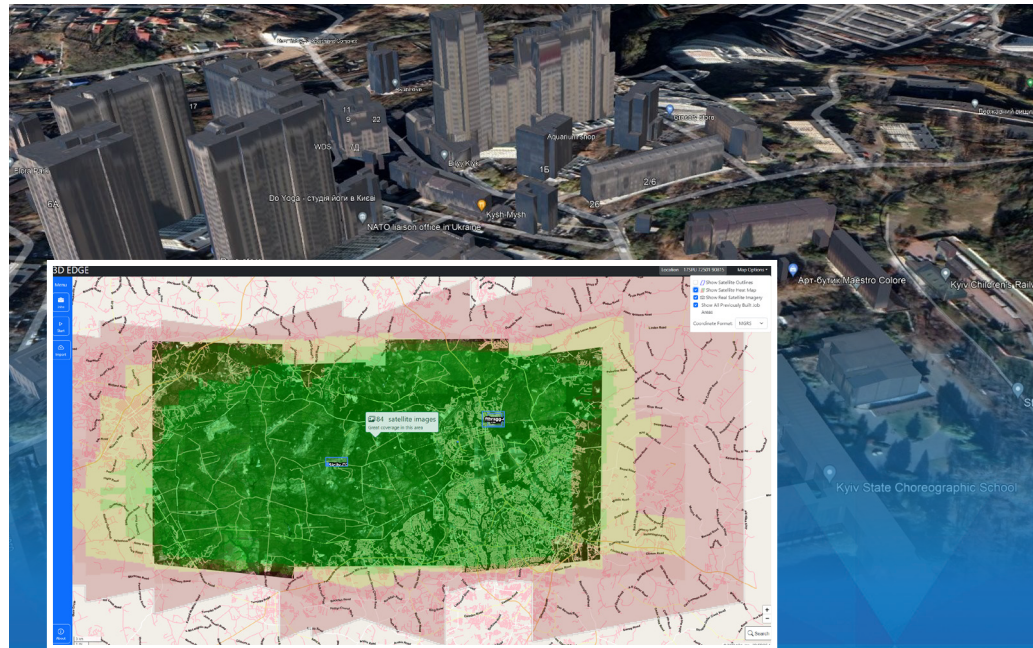


EDGE 3D



- Fully automated 3D modeling and terrain generation software from satellite imagery
- Unlimited US Government usage rights, ARA patented
- Simple intuitive GUI
- Software deployable to:
 - Laptops – denied mobile forward deployed units
 - Servers – Tactical Operations Center
 - Cloud
- Crisp and compact 3D model outputs
 - Light weight, easy to share on low-bandwidth networks
 - Easily ingested into the TAK suite



USER INTERFACE

The UI was designed for the soldier. Little to no training needed and no FSE or FSR support required.

TACTICAL EDGE

With no other ISR assets available a user can build 3D models that import into the TAK suite for mission planning, rehearsals, and command & control. This can happen in garrison, on the plane, or in the AOR. The lightweight 3D models can be easily shared over low bandwidth networks with your TAK developed mission plans for users at the very tip of the spear.



VR-TAK



WINTAK



ATAK

EDGE 3D: SYSTEM SPECIFICATIONS

EDGE 3D System Hardware Configuration

	Minimum	Preferred	Performance
CPU	8 core / 3 GHz.	16 core / 3 GHz.	32+ core / 3 GHz. [4]
System RAM	128 GB	256 GB	512 GB
GPU	Nvidia, Turing or later [1]	Nvidia Ampere	
GPU VRAM	12 GB	16GB	
SSD - OS/System	512 GB		
SSD - Data/Processing	2 TB		
Storage Array	None	10TB+ [3]	

Notes:

[1] Require CUDA Compute Capability 7.5 or higher. https://en.wikipedia.org/wiki/CUDA#GPUs_supported

Examples: GeForce RTX / Quadro RTX / Tesla T4 / RTX A4000 or better

[2] Storage space limits satellite image storage (preloaded) to a handful of regions

[3] Storage array allows for larger archival satellite image storage

[4] Workstation or server class, for example, AMD EPYC or Threadripper

CURRENT TESTED LAPTOP SPECIFICATIONS

Dell Mobile Precision Workstation 7770	
CPU	Intel Gen 12 CPU Core i9-12950HX, 30MB Cache, 24 Threads, 16 Core, 2.3GHz to 5.0GHz vPro
Graphics Card	NVIDIA RTX A5500 16GB GDDR6
Memory	128GB, 1x128GB NECC 3600MHz DDR5 CAMM
Hard Drive	M.2 2280 2 TB, Gen 4 PCIe x4 NVMe, Solid State Drive
OS	Ubuntu Linux 20.04

EDGE 3D is powered by **CORE3D**

US Patent number 11,423,610

KMZ FILES

Low polygon count, very small 3D file easy to move around low bandwidth networks. Accurate geo-rectified 3D models with textures, ingests into the TAK suite.

- Textured buildings
- Untextured buildings
- Wireframe buildings
- Textured terrain
- Bridges

TIFF FILES

Files ingest into analyst tools.

- DSM
- DTM
- MTL
- NDSM
- RGB

James Cook • jcook@ara.com • 919-210-2741

INNOVATIVE SOLUTIONS TO COMPLEX PROBLEMS

Applied Research Associates, Inc. (ARA) is an employee-owned research and engineering company known for providing technically superior solutions to complex and challenging problems in the physical sciences.

ARA approaches every project as an opportunity to go beyond expectations by delivering innovative solutions that accomplish objectives and improve our safety, security, and way of life.

www.ara.com
APPLIED RESEARCH ASSOCIATES, INC.

