

Source: www.gia.edu



Source: www.gulfcoast.com



## Customer Centered Approach

- Customized Planning Tools for Unique Customer Requirements
- Incorporates Latest Regulations, Standards, Directives & Laws
- New Product Development Using ARA's Past Experience
- Budget Sensitive & Cost Effective Solutions

## Key Features

- Compatible With Most Network Enterprise Systems & Applications
- Database Integration
- Allows Input & Simultaneous GIS Feeds/Reference Data
- Meets Latest Network Protocol & Security Standards
- Standardized & Automatic Report Writing
- Cross-organization Information Management
- Quick Information Access For Decision Making

ARA is an industry leader in the development of Custom Planning Tools. Some of our specialty tools include DM-Planner, EM-Planner and FSR-Manager.

**DM-Planner** is a computer program that assists users in preventing, preparing for, responding to, and recovering from a disaster. It includes:

- Lines of Succession
- Command Center Personnel Contact Information
- Critical Asset Protection Measures
- Critical Utility Operation Instructions (power shutoff, generator operation)
- Evacuation & Shelter-In-Place maps
- Information to identify symptoms of common Chemical, Biological, Radiological agents
- Collections & hazardous materials location including emergency contacts & preparedness/response/recovery procedures
- Evaluation of exercises/drills & provides feedback
- Information is presented in an easy to view web layout

**EM-Planner** is an automated tool to assist cities in planning and preparing for, as well as, responding to emergencies. It incorporates:

- Components of a Comprehensive Emergency Management Plan (CEMP)
- Roles & Responsibilities of City Entities for Developing & Maintaining the Plan
- 15 Emergency Support Functions (ESF) for Municipal, County, & State Entities
- City Departments & Agencies
- Facilities/Sites that provide support to the City & the City will Support during Emergency
- EOC, IC Structure, Lines of Succession, Contact Information, & Responsibilities
- Critical Utility Operation Instructions (Power Shutoff, Generator Operation)
- View Input Information in a Graphic Web Layout Mode
- NIMS Compliant
- Database of Contacts & Key References

**FSR-Manager** is the ONLY Risk Assessment tool that guides the user through the Federal Security Risk Management (FSRM) process. Users can:

- Input a description of the facility: # of people occupying the facility, the tenants represented, contacts made during the assessment, the construction details, etc.
- Input existing threats & countermeasures
- Assign an impact of loss & a vulnerability rating to each threat
- Input countermeasure upgrade alternatives & associated costs
- Reevaluate impact of loss & vulnerability based on countermeasure implementation
- Input graphics of the facility, existing countermeasures, etc.

Science • Engineering • Security

Solutions For Government & Industry

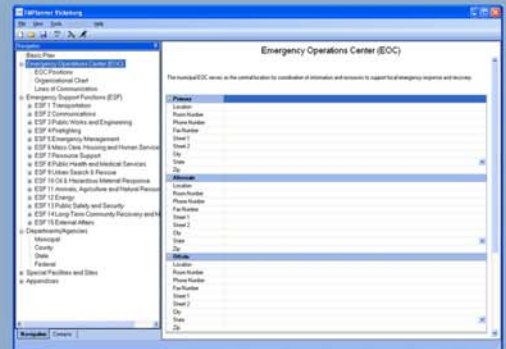
**Selected Clients**

- City of Vicksburg, Mississippi
- Department of Commerce
- Federal Protective Service
- Internal Revenue Service
- Office of Personnel Management
- Smithsonian Institution
- Social Security Administration

**dmp**  
Disaster Management  
Planner



**EMPlanner** *Vicksburg*



Office of Personnel Management  
**FSR-ManagerOPM**



		Vulnerability to Threat			
		Very High	High	Moderate	Low
Impact of Loss	Devastating				
	Severe				
	Noticeable				
	Minor				

